

TOWN & COUNTRY
ESTATES



The Paddock, Brokerswood, Wiltshire BA13 4EH

£102,750

LOCATION

Nestled in the heart of Wiltshire's picturesque countryside, Brokerswood is a charming holiday park offering a perfect blend of outdoor adventure and tranquility. Surrounded by 80 acres of ancient woodland, this idyllic retreat is ideal for families, couples, and nature enthusiasts. The park boasts a variety of activities, including water sports, archery, axe throwing, and a dedicated children's play area. For those seeking relaxation, the serene surroundings provide a peaceful escape from the hustle and bustle of daily life.

DESCRIPTION

NO ONWARD CHAIN - Tucked away in a peaceful private paddock with just a handful of other lodges, this beautifully renovated two-bedroom lodge offers the perfect retreat for those seeking privacy and comfort. Completely renovated just a year ago, the lodge is in excellent condition, combining modern finishes with a homely feel.

Step outside onto the private veranda and enjoy your own inset hot tub — an ideal spot to relax and unwind in total seclusion. Inside, the open-plan living area features stylish décor, creating a cozy and inviting space that's perfect for both entertaining and quiet evenings in.

The two spacious bedrooms offer a calm and restful environment, ideal after a day of exploring the surrounding countryside or simply enjoying the peace and quiet of this tucked-away setting.

Though secluded, the lodge is set within a well-maintained holiday park offering a range of activities including water sports, axe throwing, archery, a convenience shop and a children's play area. The balance of amenities and tranquility makes this a truly special escape.

There are two private parking spaces directly outside for added convenience, and a fishing lake within Brokerswood Country Park is just a five-minute walk away, offering even more opportunities to enjoy the outdoors.

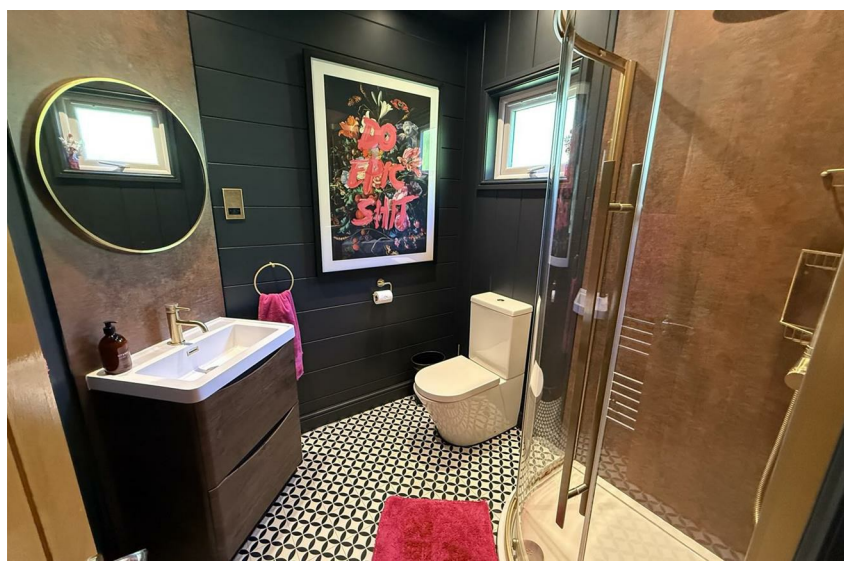
With fantastic subletting potential, this hidden gem won't be available for long. Call today to arrange your viewing!

PITCH FEES

Pitch fees are fully paid for the remainder of 2025, offering excellent value.

From January 2026, pitch fees will be £7,885 for 2026.

Fantastic potential to earn rental income through existing agreements with Haulfryn and Hoseason Holidays — a seamless way to generate returns when you're not using the lodge yourself.









GROUND FLOOR



Whilst every attempt has been made to ensure the accuracy of the floorplan contained here, measurements of doors, windows, rooms and any other items are approximate and no responsibility is taken for any error, omission or mis-statement. This plan is for illustrative purposes only and should be used as such by any prospective purchaser. The services, systems and appliances shown have not been tested and no guarantee as to their operability or efficiency can be given.
Made with Metropix ©2025

GROUND FLOOR
869 sq.ft. (80.7 sq.m.) approx.



For illustrative purposes only. Decorative finishes, fixtures, fittings and furnishings do not represent the current state of the property. Measurements are approximate. Not to scale.
Made with Metropix © 2025

SALES & MORTGAGES & LETTINGS

TOWN & COUNTRY MORTGAGES

FEE FREE Mortgage Services

- RE-MORTGAGES
- FIRST TIME BUYER
- HOME MOVER
- BUY TO LET



YOUR PROPERTY MAY BE REPOSSESSED IF YOU DO NOT
KEEP UP REPAYMENTS ON YOUR MORTGAGE

OFFICE, HOME AND TELEPHONE
APPOINTMENTS AVAILABLE

CONTACT US ON:
01225 776699

BOOK ONLINE:
www.townandcountrymortgages.net

FIND US ON  

OLIVER BROWNING
Managing Director

NB. Town and Country Estates have not tested any equipment, fixtures, fittings or services and cannot guarantee that they are in working order. Buyers are advised to seek professional advice from their solicitors or surveyor. Internal measurements should not be relied upon for fitting of carpets or furniture without checking. These details have been prepared in good faith and whilst believed to be correct give notice that none of the statements are to be relied upon as statements or representations of fact. Some statements are inevitably subjective and are therefore the view of the author at the time the information was prepared. If any items are particularly important to you then please check with this office first, especially if travelling some distance to view.